

**FAIRVIEW
PROVIDING**

**AUTOMOTIVE
EDUCATIONAL
OPPORTUNITIES**

FAIRVIEW EDUCATIONAL SERVICES LIMITED

- *Private Training Establishment*
- *NZQA Accredited Provider*
- *TEC Contracted Provider*
- *Automotive and Panel beating Fee-paying Courses Offered*
- *Student Loans and Allowances Available*
- *Industry Based Focus*



GATEWAY SERVICES 2010



473 TE RAPA ROAD, HAMILTON
TELEPHONE 07 849 9828
Email: gateway@fairviews.co.nz
Website: www.feds.co.nz

AUTOMOTIVE GATEWAY – MADE EASY

Fairview Educational Services is based in Hamilton and is a division of Fairview Ford. We are an accredited training provider and have been delivering Automotive Training on site for over 12 years. When Gateway was introduced we developed packages for schools consisting of tailored workbooks and assessments. We currently supply our Gateway packages to over 70 schools throughout New Zealand.

Our Gateway Starter package consists of 5 workbooks, covering 6 unit standards to the value of 12 level 2 credits. Our package includes the supply and marking of the workbooks and assessments for each of the unit standards. We also offer a range of Gateway Follow Up packs and are open to discussing tailored packages for your students if required.

Our aim is to streamline the process for the Gateway Coordinators and to make it as stress free as possible.

Benefits of our packs include:

- ☞ As all the assessments are theory based, the management of assessment for schools and colleges is very straight forward. There is no need to gather evidence from the work placement for assessment purposes and there is no need for industry assessors to visit the workshop to verify evidence.
- ☞ Although the units are theoretically assessed the workbooks are designed to be completed in a real life automotive workshop. Most of the workbooks have practical tasks which support the learning.
- ☞ The assessment materials are designed to assess student knowledge rather than their recall and are set at the appropriate level.

If you would like additional information, please call or email either Nicki or Justin or visit our website at www.feds.co.nz.

We are pleased to offer the following Automotive Gateway Packages:

Pack 1: Starter

Unit Id	Title	Level	Credit	Assessment
16113	Demonstrate knowledge of safe working practices in an automotive workshop	2	2	Theory
3856	Identify emergency procedures in the motor and related industries	2	2	Theory
21674	Demonstrate knowledge of terminology used in the motor industry	2	2	Theory
21673	Demonstrate knowledge of maintaining stock security in the motor industry	2	2	Theory
21669	Demonstrate knowledge of hand tools and workshop equipment	2	2	Theory
21686	Demonstrate knowledge of automotive cooling systems	2	2	Theory
	Credit Total		<u>12</u>	

This entry pack is an ideal starting point for students who are considering entering the motor industry.

Pack 2: Follow Up

Unit Id	Title	Level	Credit	Assessment
21720	Demonstrate knowledge of vehicle braking systems	2	2	Theory
3877	Demonstrate knowledge of protecting vehicle electronics	2	2	Theory
21689	Demonstrate knowledge of hydraulic brake fluid, fluid replacement and brake bleeding procedures	2	2	Theory
231	Explain the operation of two and four stroke petrol and diesel engines	2	4	Theory
240	Demonstrate knowledge of petrol fuel systems	2	3	Theory
	Credit Total		<u>13</u>	

This pack introduces students to some of the main principles of vehicle operation. It is ideal for students who are planning a career as a motor vehicle technician (cars/motorcycles).

Pack 3: Diesel

Unit Id	Title	Level	Credit	Assessment
16113	Demonstrate knowledge of safe working practices in an automotive workshop	2	2	Theory
3856	Identify emergency procedures in the motor and related industries	2	2	Theory
21674	Demonstrate knowledge of terminology used in the motor industry	2	2	Theory
21677	Demonstrate knowledge of a diesel fuel system	2	2	Theory
231	Explain the operation of two and four stroke petrol and diesel engines	2	4	Theory
	Credit Total		12	

This pack is tailored for students who are planning a career as a diesel technician (trucks, plant, graders etc).

Pack 4: Panelbeating

Unit Id	Title	Level	Credit	Assessment
16113	Demonstrate knowledge of safe working practices in an automotive workshop	2	2	Theory
3856	Identify emergency procedures in the motor and related industries	2	2	Theory
3877	Demonstrate knowledge of protecting vehicle electronics in the motor industry	2	2	Theory
21682	Demonstrate knowledge of an oxy acetylene welding plant in the motor industry	2	2	Theory
21683	Demonstrate knowledge of MIG welding in the motor industry	2	2	Theory
21674	Demonstrate knowledge of terminology used in the motor industry	2	2	Theory
	Credit Total		12	

This pack is tailored for students who are planning a career as a panelbeater or coachbuilder.

Pack 5: Administration

Unit Id	Title	Level	Credit	Assessment
16113	Demonstrate knowledge of safe working practices in an automotive workshop	2	2	Theory
3856	Identify emergency procedures in the motor and related industries	2	2	Theory
21674	Demonstrate knowledge of terminology used in the motor industry	2	2	Theory
21673	Demonstrate knowledge of maintaining stock security in the motor industry	2	2	Theory
21857	Identify the occupational areas and structure of the NZ motor industry	1	2	Theory
	Credit Total		10	

These units are useful for students who are planning careers in parts warehousing, parts sales and vehicle sales.

Pack 6: Automotive Electrical

Unit Id	Title	Level	Credit	Assessment
3877	Demonstrate knowledge of protecting vehicle electronics in the Motor Industry	2	2	Theory
234	Describe automotive starting and charging systems	2	4	Theory
235	Describe automotive ignition systems	2	4	Theory
	Credit Total		10	

This pack is tailored for students who are planning a career as an automotive technician (auto electrician, car mechanic, diesel mechanic).

Pack 7: Level Three

Unit Id	Title	Level	Credit	Assessment
918	Demonstrate knowledge of light vehicle final drive assembly operation	3	4	Theory
920	Describe the construction and operation of manual and semi automatic transmissions used on light vehicles	3	4	Theory
15373	Demonstrate knowledge of automotive air conditioning	3	4	Theory
	Credit Total		12	

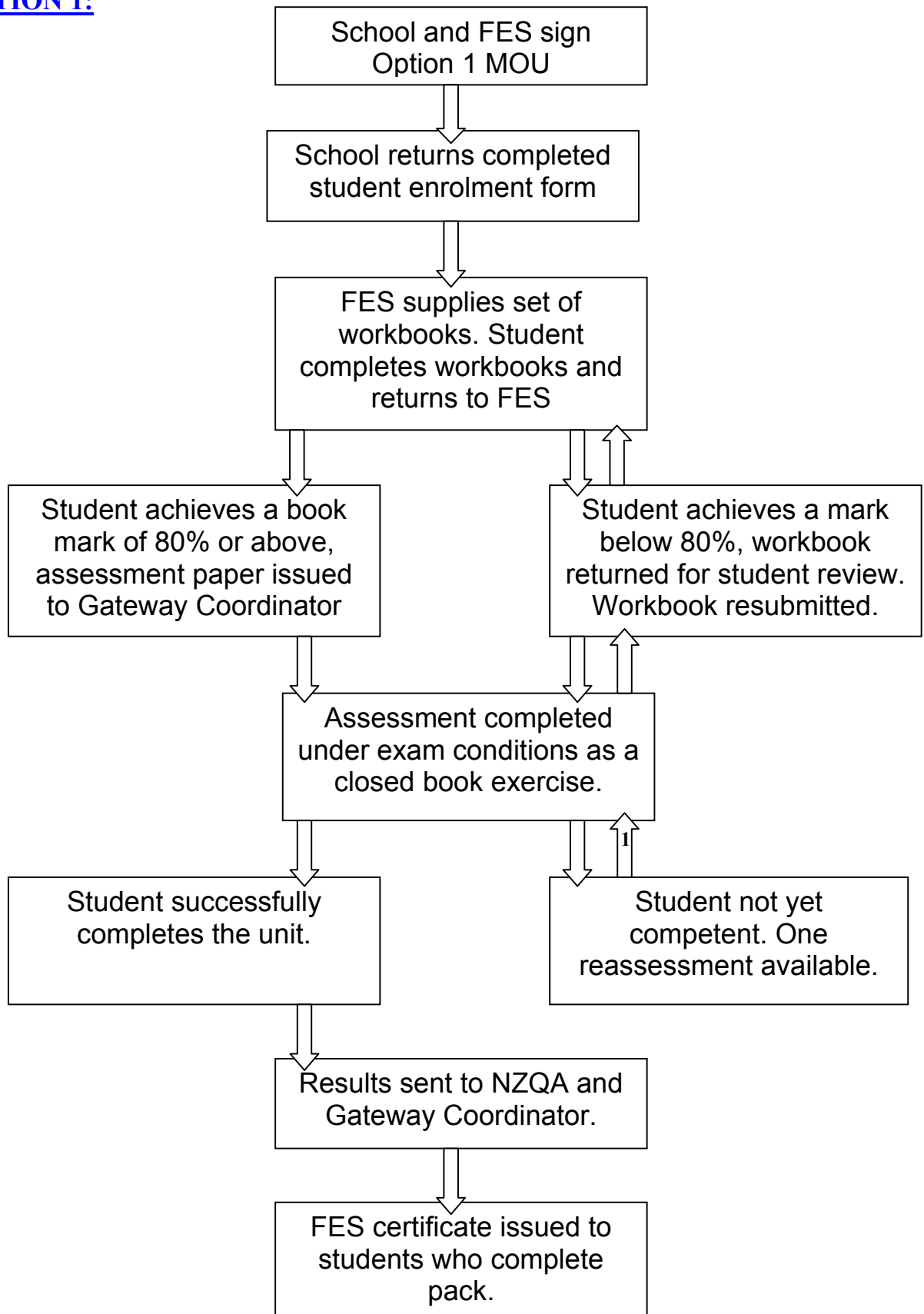
This pack is tailored for students who are working at level three at school. Please note that the units are more challenging than the level two units.

OPTION 1: FES REPORTS THE RESULTS TO NZQA

\$270+GST per student (excludes courier and postage charges). This price covers:

- Enrolling students onto our student management system (students to complete gateway enrolment form).
- Supply of workbook for each unit standard for each student.
- Marking of completed workbook (schools send books to FES).
- Supply of theory assessment (FES issues assessment paper to school, assessment takes place at school or workplace under exam conditions).
- Marking of assessment (school sends back assessment papers for marking).
- Reporting assessment results to NZQA (FES to pay reporting fees).
- Reporting assessment results to school/College.
- Certificates issued to students who complete the Gateway Starter Pack.

OPTION 1:



MEMORANDUM OF UNDERSTANDING

FAIRVIEW EDUCATIONAL SERVICES LIMITED (Provider Code 7265)
(hereinafter called the “**Provider**”)

and High School/College
(hereinafter called the “**School**”)

agree to negotiate the supply of Gateway workbooks and assessment designated in the Schedule A (or any variation as negotiated).

- 1 The **Provider** acknowledges that it is accredited by the New Zealand qualifications Authority (NZQA) for all courses offered/provided. Evidence of accreditation will be provided on request from the school. Assessment and moderation will be in accordance with NZMITO requirements.

- 2 The **Provider** and the School agree that a contract arising from this memorandum will exist once the school has requested a Gateway service.

On behalf of:

FAIRVIEW EDUCATIONAL SERVICES (the **Provider**)

Signature:

Position:

Date:

On behalf of:

.....(the **school**)

Name:

Signature:

Position:

Date:

Gateway Contact:

SCHEDULE A

This Agreement covers the following services:

Provider to load students on to its student management system (using completed Gateway enrolment form)

Supply of student workbooks to school

Marking of student workbooks

Assessment and reassessment (up to 1 reassessment as required)

Reporting of results to NZQA (provider to pay NZQA fees)

Reporting of results to School.

This agreement covers the following unit standards:

Gateway automotive units as set out in the starter and follow up packs.

The School agrees to:

Ensure students complete and return the Provider Gateway enrolment form.

Ensure the integrity of the assessment (assessments are to be conducted as closed book exercises under exam conditions, assessment papers are to be held securely).

Ensure that there is no reproduction/photocopying of the materials provided.

Estimated number of students to be enrolled:

School Year:.....

Estimated value of services intended to be purchased (at \$270+GST per pack)

School Year: \$.....

If you wish to place an order at this stage you may do so below:

Order Number	Quantity Required Starter Packs	Quantity Required Follow Up Packs	Date Required

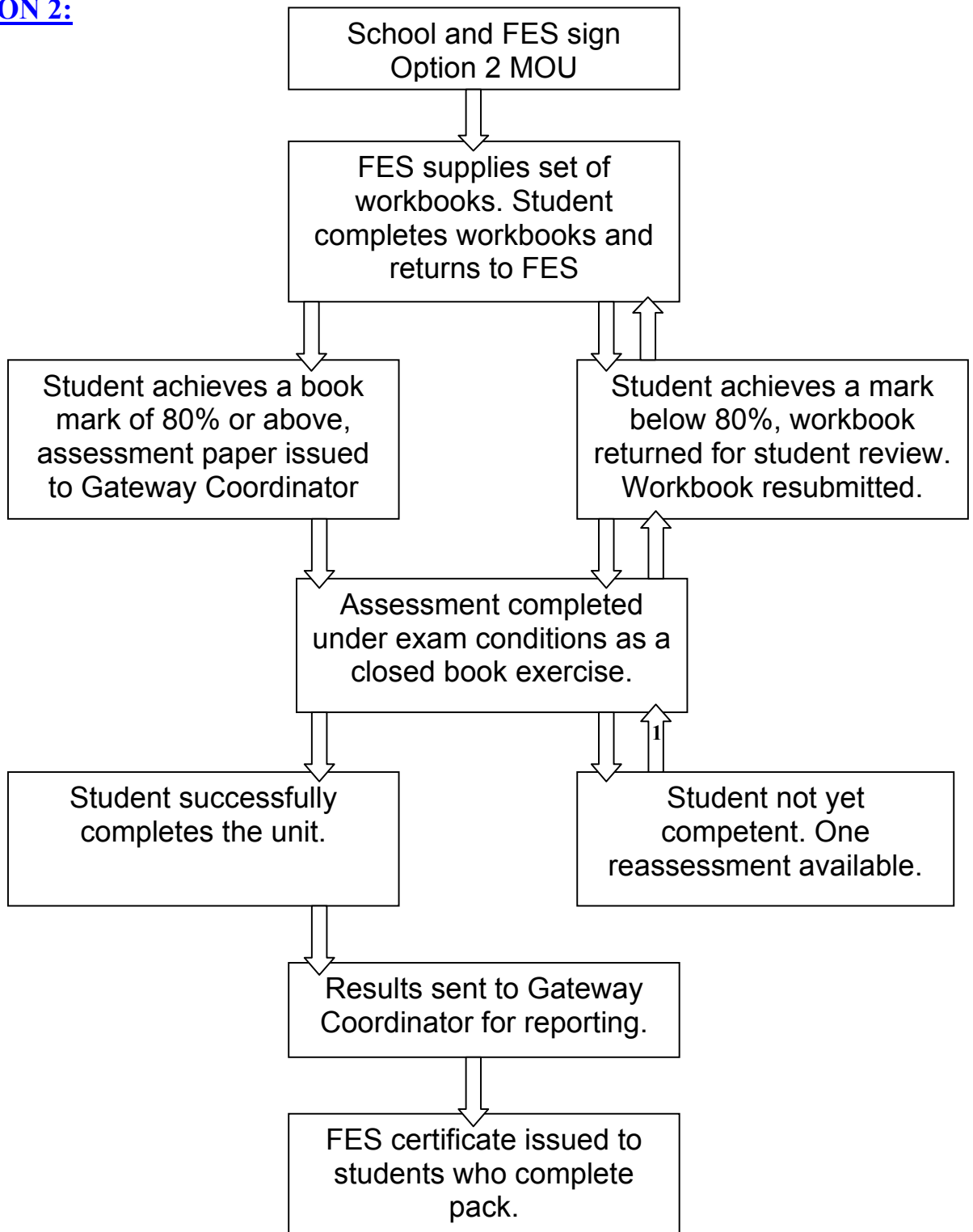
OPTION 2: SCHOOL REPORTS THE RESULTS TO NZQA

\$250+GST per student (excludes courier and postage charges). This price covers:

- Supply of workbook for each unit standard for each student.
- Marking of completed workbook (schools send books to FES).
- Supply of theory assessment (FES issues assessment paper to school, assessment takes place at school or workplace under exam conditions).
- Marking of assessment (school sends back assessment papers for marking).
- Reporting assessment results to school/College.
- Certificates issued to students who complete the Pack.

For further details please contact our office on 07 849 9828 or email gateway@fairviews.co.nz

OPTION 2:



MEMORANDUM OF UNDERSTANDING

FAIRVIEW EDUCATIONAL SERVICES LIMITED (Provider Code 7265)

(hereinafter called the “**Provider**”)

and High School/College
(hereinafter called the “**School**”)

agree to negotiate the supply of Gateway workbooks and assessment designated in the Schedule A (or any variation as negotiated).

- 3 The **Provider** acknowledges that it is accredited by the New Zealand qualifications Authority (NZQA) for all courses offered/provided. Evidence of accreditation will be provided on request from the school. Assessment and moderation will be in accordance with NZMITO requirements.

- 4 The **Provider** and the School agree that a contract arising from this memorandum will exist once the school has requested a Gateway service.

On behalf of:

FAIRVIEW EDUCATIONAL SERVICES (the **Provider**)

Signature:

Position:

Date:

On behalf of:

..... (the **school**)

Name:

Signature:

Position:

Date:

Gateway Contact:

SCHEDULE A

This Agreement covers the following services:

Provision of student workbooks as required.

Marking of student workbooks

Assessment and reassessment (up to 1 reassessment as required)

Reporting of results to School.

This agreement covers the following unit standards:

Gateway automotive units as set out in the starter and follow up packs.

The School agrees to:

Ensure the integrity of the assessment (assessments are to be conducted as closed book exercises under exam conditions, assessment papers are to be held securely).

Ensure that there is no reproduction/photocopying of the materials provided.

Ensure that results are reported to NZQA only after receiving written confirmation from our office of the results.

Ensure that results are reported using our provider code.

Estimated number of students to be enrolled:

School Year:.....

Estimated value of services intended to be purchased (at \$250+GST per pack)

School Year: \$.....

If you wish to place an order at this stage you may do so below:

Order Number	Quantity Required Starter Packs	Quantity Required Follow Up Packs	Date Required